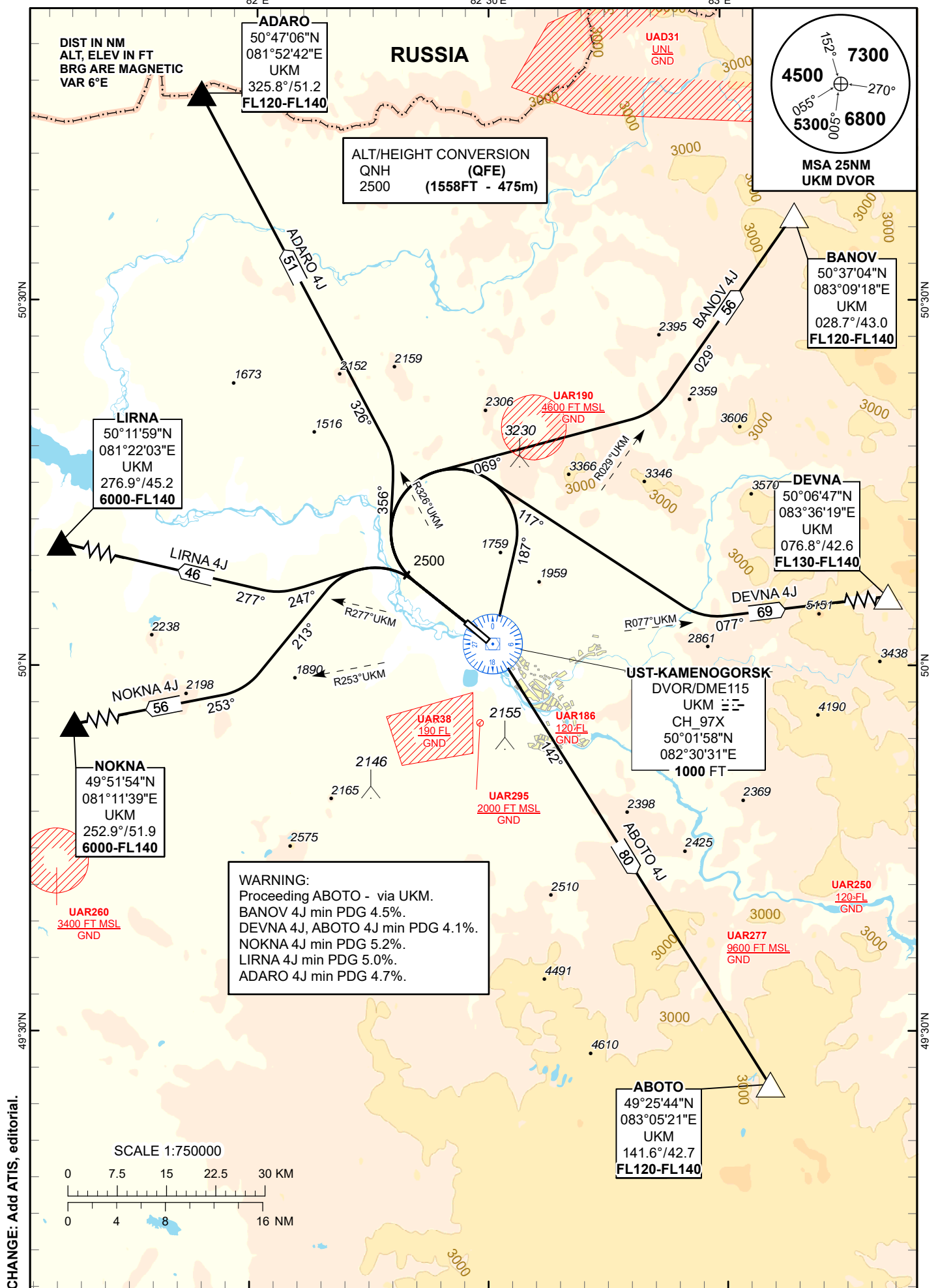


UST-KAMENOGORSK
RWY 30



STANDARD DEPARTURE ROUTES – INSTRUMENT (SID) UST-KAMENOGORSK RWY 30
BANOV 4J After take-off climb straight ahead to 2500 FT, turn RIGHT on track 069° until intercept R 029°UKM, then proceed to BANOV R 028.7° D 43.0 UKM. Cross BANOV at FL120-FL140.
DEVNA 4J After take-off climb straight ahead to 2500 FT, turn RIGHT on track 117° until intercept R 077°UKM, then proceed to DEVNA R 076.8° D 42.6 UKM. Cross DEVNA at FL130-FL140.
ABOTO 4J After take-off climb straight ahead to 2500 FT, turn RIGHT to UKM, after crossing UKM turn LEFT on track 142° to ABOTO R 141.6° D 42.7 UKM. Cross ABOTO at FL120-FL140.
NOKNA 4J After take-off climb straight ahead to 2500 FT, turn LEFT on track 213° until intercept R 253° UKM, then proceed to NOKNA R 252.9° D 51.9 UKM. Cross NOKNA at 6000-FL140.
LIRNA 4J After take-off climb straight ahead to 2500 FT, turn LEFT on track 247° until intercept R 277° UKM, then proceed to LIRNA R 276.9° D 45.2 UKM. Cross LIRNA at 6000-FL140.
ADARO 4J After take-off climb straight ahead to 2500 FT, turn RIGHT on track 356° until intercept R 326° UKM, then proceed to ADARO R 325.8° D 51.2 UKM. Cross ADARO at FL120-FL140.